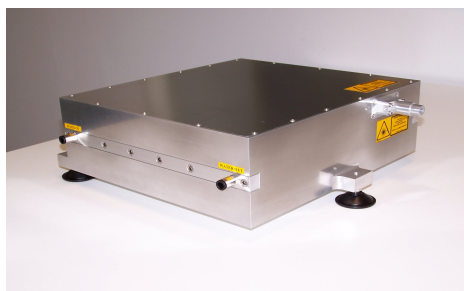


Spec. type: pWEDGE

Specification #: PW11B01

High Peak Power Diode Pumped Solid State Laser



FEATURES

- _ 532 nm
- _ up to 4W
- _ 500 ps @ 50 kHz
- _ 900 ps @ 100 kHz
- _ Integrated Design
- _ Water Cooled

Technical Specifications	Minimum	Typical	Maximum
Primary Output Wavelength		532	nm
Q-Switch Repetition Rate	20	50	100 kHz
Secondary wavelengths	(can be attenuated)	1064	nm
Pulse Energy at 532 nm	30	80	90 uJ
Pulse Width	500		900 ps
Pulse stability (RMS)		<5%	
Polarization		Linear	
M ²		≤ 1.5	
Beam diameter (1/e ²)		≤ 2	mm
Pulse frequency control input		TTL (0 to 5V)	
Energy level control input		0 to 10 V (analog)	
Cooling		Tap Water	
Power Supply		Dual DC Supply: 8 V and 15 V	
Optional AC/DC power supply		100 – 230 V AC	
Control Connector		DB 25 pin	
Size of the unit (preliminary)		36 x 40 x 14	cm



All information included in this document is subject to change without notice.

Updated data sheets can be provided on request.

For further details, please contact your local **Bright Solutions** sales representative or visit our website at www.brightsolutions.it

Bright Solutions Srl
Soluzioni Laser Innovative
 Via Artigiani, 27
 27010 Cura Carpignano -PV
 Italy
Ph. +39 0382583091
Fax. +39 0382583690
e-mail: info@brightsolutions.it