

WEDGE HF 1064nm

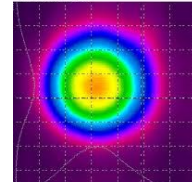
Spec. #: WHF18801

Diode Pumped Solid State Laser



MAIN FEATURES

- _ 1064 nm
- _ 700 ps
- _ > 180 μ J
- _ Compact Design
- _ Air Cooled



Technical Specifications

Output Wavelength	1064	nm
Q-Switch Repetition Rate	10 to 100 <i>(option: single shot to 10 kHz)</i>	kHz
Pulse energy @ 1064nm	Up to 180 @ 10kHz	μ J
Pulse Width	0.7 to 2.5	ns
Low Jitter Option (for direct Q-Switch driving)	< 300	ps
Pulse to pulse Energy stability (RMS)	< 3% up to 20 kHz	
Polarization	Linear 100:1	
M ²	< 1.6	
Beam diameter (1/e ²)	< 2.5 <i>(collimated)</i>	mm
Pulse frequency control input	TTL (0 - 5V)	
Energy level control input	0 to 10 V (Analog)	
Cooling	Air Cooling, integrated thermostatic fan	
Power supply input	24 V DC – < 7 A	
Control Connector	DB 25 pin	
Optional AC/DC power supply	100 – 230 VAC	
Size of the unit	18 x 9 x 7	cm ³
Weight	< 2	kg



All information included in this document is subject to change without notice.

Updated data sheets can be provided on request.

For further details, please contact your local **Bright Solutions** sales representative or visit our website at www.brightsolutions.it

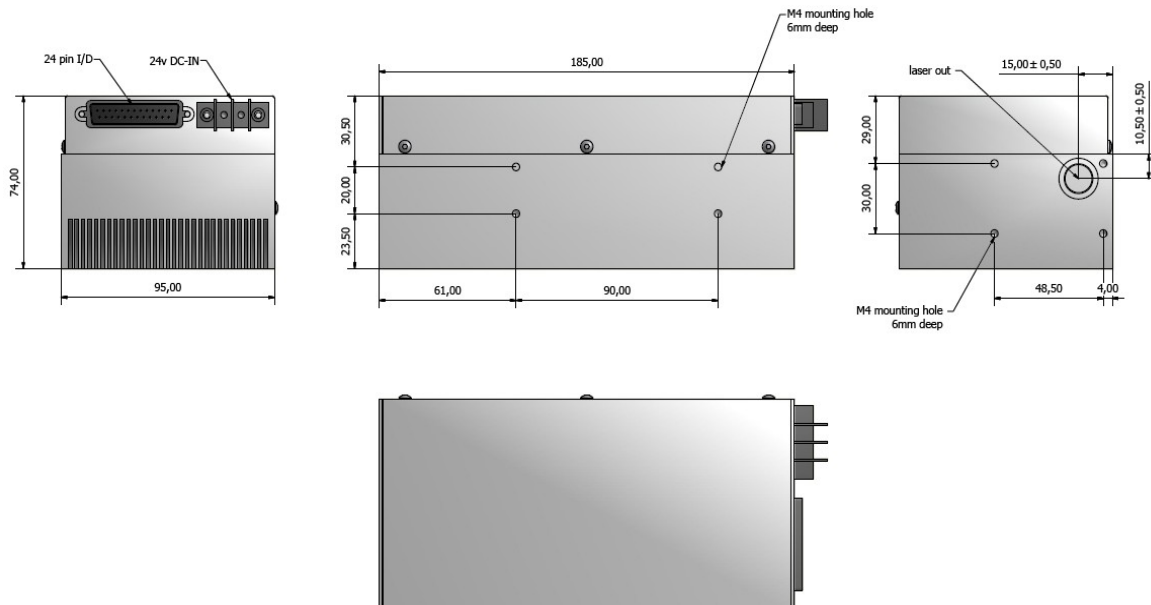
Bright Solutions Srl

Via Artigiani, 27
27010 Cura Carpignano - PV
Italy

Phone: +39 0382 583094

e-mail: sales@brightsolutions.it

Mechanical Drawings



All dimensions are in mm

Options Available:

- Beam Expanding and Collimating optics
- Red Aiming beam
- Circular Polarization
- Water and contact cooling

Applications:

- Ablation / Micromachining of thin films
- LIDAR – LADAR - LIBS
- Specialty Scribing / Material processing



All information included in this document is subject to change without notice.

Updated data sheets can be provided on request.

For further details, please contact your local **Bright Solutions** sales representative or visit our website at www.brightsolutions.it

Bright Solutions Srl
Via Artigiani, 27
27010 Cura Carpignano - PV
Italy
Phone: +39 0382 583094
e-mail: sales@brightsolutions.it