


Conduction Cooled QCW Vertical Stack Diode Laser (G-Stack)-GS05



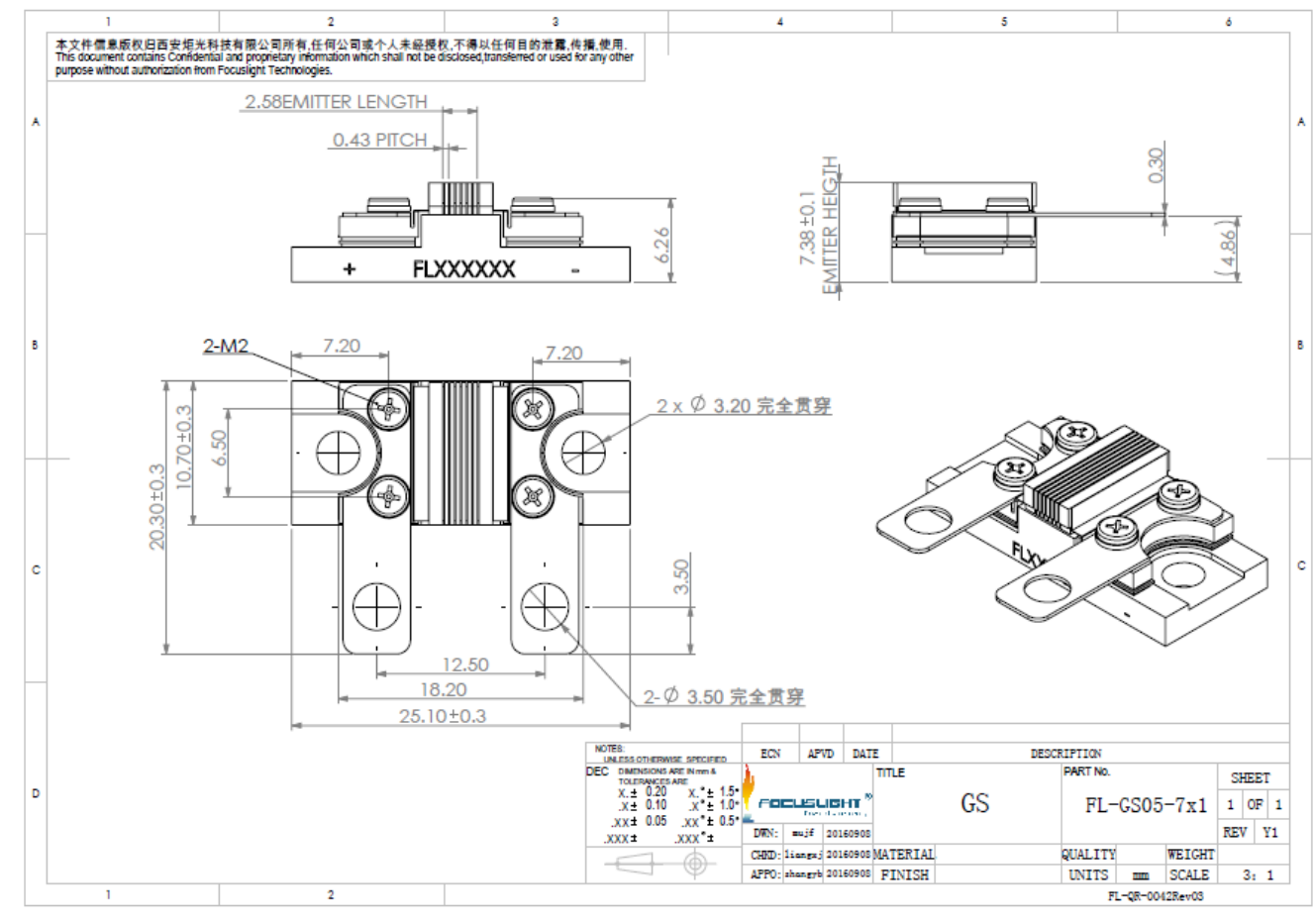
Features

- AuSn Bonding
- High duty cycle
- Collimation available
- High power
- Standard product

Applications

- Pumping
- Illumination
- Industry
- Research

Device Dimension (mm)



Specification

Module Type ¹	Units	FL-GS05-NX1-XXX-808(Q)
Operation Mode		QCW
Pulse width	us	≤300
Duty Cycle	%	≤3
Bar Pitch	mm	0.43、1.13 (0.73、2.13 optional)
Expected Lifetime	shots	1X10 ⁹
Optical Parameters^{3,5}		
Center Wavelength λ	nm	808
Wavelength Tolerance	nm	±3
Output Power/bar	W	≤300
Number of Bars	-	1~12
Spectral Width FWHM	nm	≤4
Spectral Width FW90%E	nm	≤6
Fast Axis Divergence(FWHM)	°	35 (typical)
Fast Axis Divergence(FWHM) with FAC	°	≤5
Slow Axis Divergence (FWHM)	°	8 (typical)
Polarization Mode	-	TE/TM
Wavelength Temp. Coefficient	nm/°C	~0.28
Electrical Parameters^{3,5}		
Operating Current I_{op}	A	≤330
Threshold Current I_{th}	A	≤40
Operating Voltage/bar V_{op}	V	≤2
Slope Efficiency/bar	W/A	≥1
Power Conversion Efficiency	%	≥50
Ambient Parameters		
Operating Temperature	°C	-45 ~ 60
Recommended Operating Temperature	°C	25
Storage Temperature ⁴	°C	-55 ~ 85

¹Explanation for the name of Module Type: FL(abbreviation of Focuslight) –GSxx (structure code) –N (Number of Bars) -X(Power) -#(center wavelength)(Q:QCW).

²Reduced lifetime if used above nominal operating conditions.

³Data at 25°C temperature, unless otherwise stated.

⁴A non-condensing environment is required for storage and operation below ambient dew point.

⁵If there are any other requirements, please contact us.



Focuslight Technologies Inc.

Add: No.56 Zhangba 6th Road, High-Tech Zone,
Xi'an, Shaanxi 710077, P.R. China

Tel: +86-29 8956 00050

Fax: +86-29 8177 5810

Email: sales@focuslight.com.cn

Website: www.focuslight.com.cn

Copyright ©2009 Focuslight. All rights reserved.

