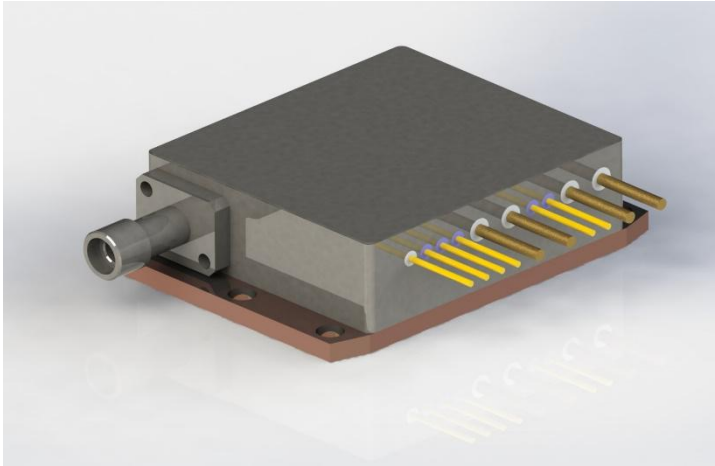


**450nm 5W Detachable Diode Laser****K450FMWCN-5.000W (Customized Product)****Features:**

- ◆ 450nm wavelength
- ◆ 5W output power
- ◆ 200 $\mu$ m fiber core diameter
- ◆ 0.22NA

**Applications:**

- ◆ Medical use

BWT Beijing's High Power Diode Laser Modules are manufactured by adopting specialized fiber-coupling techniques, resulting in volume products with a high efficiency, stability and superior beam quality. The products are achieved by transforming the asymmetric radiation from the laser diode chip into an output fiber with small core diameter by using special micro optics. Inspecting and burn-in procedures in every aspect come to a result to guarantee each product with the reliability, stability and long lifetime.

Our research staffs are constantly improving and innovating the processing technology in the producing process, based on the professional knowledge and experience accumulated in long-terms. We are also continuously developing new products to meet customers' specific needs.

At BWT Beijing, to provide high quality products with reasonable price is always our goal.

## 450nm 5W Detachable Diode Laser

### K450FMWCN-5.000W (Customized Product)

Specifications(25°C)		Symbol	Unit	K450FMWCN-5.000W		
				Minimum	Typical	Maximum
Optical Data <sup>(1)</sup>	CW-Output Power	$P_o$	W	5.0	-	-
	Center Wavelength	$\lambda_c$	nm	450±10		
	Spectral Width (FWHM)	$\Delta\lambda$	nm	-	6	-
	Wavelength Shift with Temperature	$\Delta\lambda/\Delta T$	nm/°C	-	0.3	-
	Wavelength Shift with Current	$\Delta\lambda/\Delta A$	nm/A	-	1	-
Electrical Data	Electrical-to-Optical Efficiency	PE	%	-	20	-
	Operating Current	$I_{op}$	A	-	-	3
	Threshold Current	$I_{th}$	A	-	0.35	-
	Operating Voltage	$V_{op}$	V	-	-	10
	Slope Efficiency	$\eta$	W/A	-	2.0	-
Fiber Data	Core Diameter	$D_{core}$	μm	-	200	-
	Numerical Aperture	NA	-	-	0.22	-
	Connector	-	-	-	SMA905	-
Thermistor	-	$R_t$	(K Ω)/β(25°C)	-	10±3%/3477	-
Others	ESD	$V_{esd}$	V	-	-	500
	Storage Temperature <sup>(2)</sup>	$T_{st}$	°C	-20	-	70
	Operating Case Temperature <sup>(3)</sup>	$T_{op}$	°C	15	-	35
	Relative Humidity	RH	%	15	-	75

(1) Data measured under operation output at 5W@25°C.

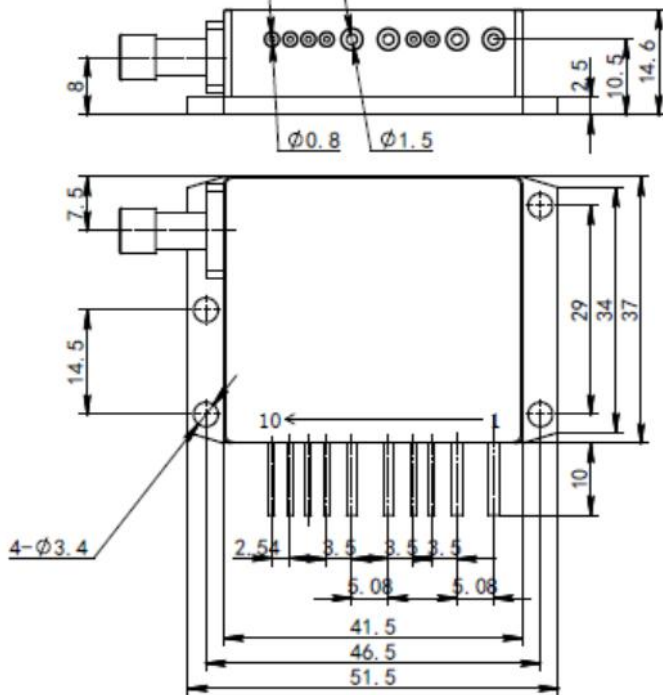
(2) A non-condensing environment is required for operation and storage.

(3) Operating temperature defined by the package housing. Acceptable operating range is 15°C~35°C, but performance may vary.

## 450nm 5W Detachable Diode Laser

### K450FMWCN-5.000W (Customized Product)

#### Package Dimensions (mm)



引脚	功能
1	-
2	-
3	-
4	-
5	450LD(-)
6	450LD(+)
7	-
8	-
9	-
10	-

#### OPERATING NOTES

- ◆ Avoid eye and skin exposure to direct radiation during operation.
- ◆ ESD precautions must be taken during storage, transportation and operation.
- ◆ Make sure the fiber output end and input end is properly cleaned before operation of laser. Follow safety protocols to avoid injury when handling and cutting the fiber.
- ◆ Use constant current power supply to avoid surge current during operation.
- ◆ Laser diode must be used according to the specifications.
- ◆ Laser diode must work with good cooling.
- ◆ Operation temperature ranges from 15°C to 35°C .
- ◆ Storage temperature ranges from -20°C to +70°C .

**Declaration:** information and specifications contained herein are deemed to be reliable and accurate. BWT Beijing reserves the right to change, alter or modify the design and specifications of these products at any time without notice.19-1