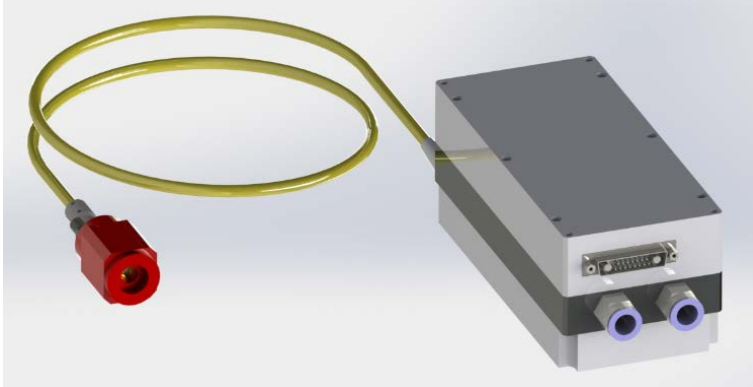


808nm 300W High Power Fiber Coupled Diode Laser K808FN5RN-300.0W



Features:

- ◆ 808nm wavelength
- ◆ 300W output power
- ◆ 400 μ m fiber core diameter

Applications:

- ◆ Hair removal

BWT Beijing's High Power Diode Laser Modules are manufactured by adopting specialized fiber-coupling techniques, resulting in volume products with a high efficiency, stability and superior beam quality. The products are achieved by transforming the asymmetric radiation from the laser diode chip into an output fiber with small core diameter by using special micro optics. Inspecting and burn-in procedures in every aspect come to a result to guarantee each product with the reliability, stability and long lifetime.

Our research staffs are constantly improving and innovating the processing technology in the producing process, based on the professional knowledge and experience accumulated in long-terms. We are also continuously developing new products to meet customers' specific needs.

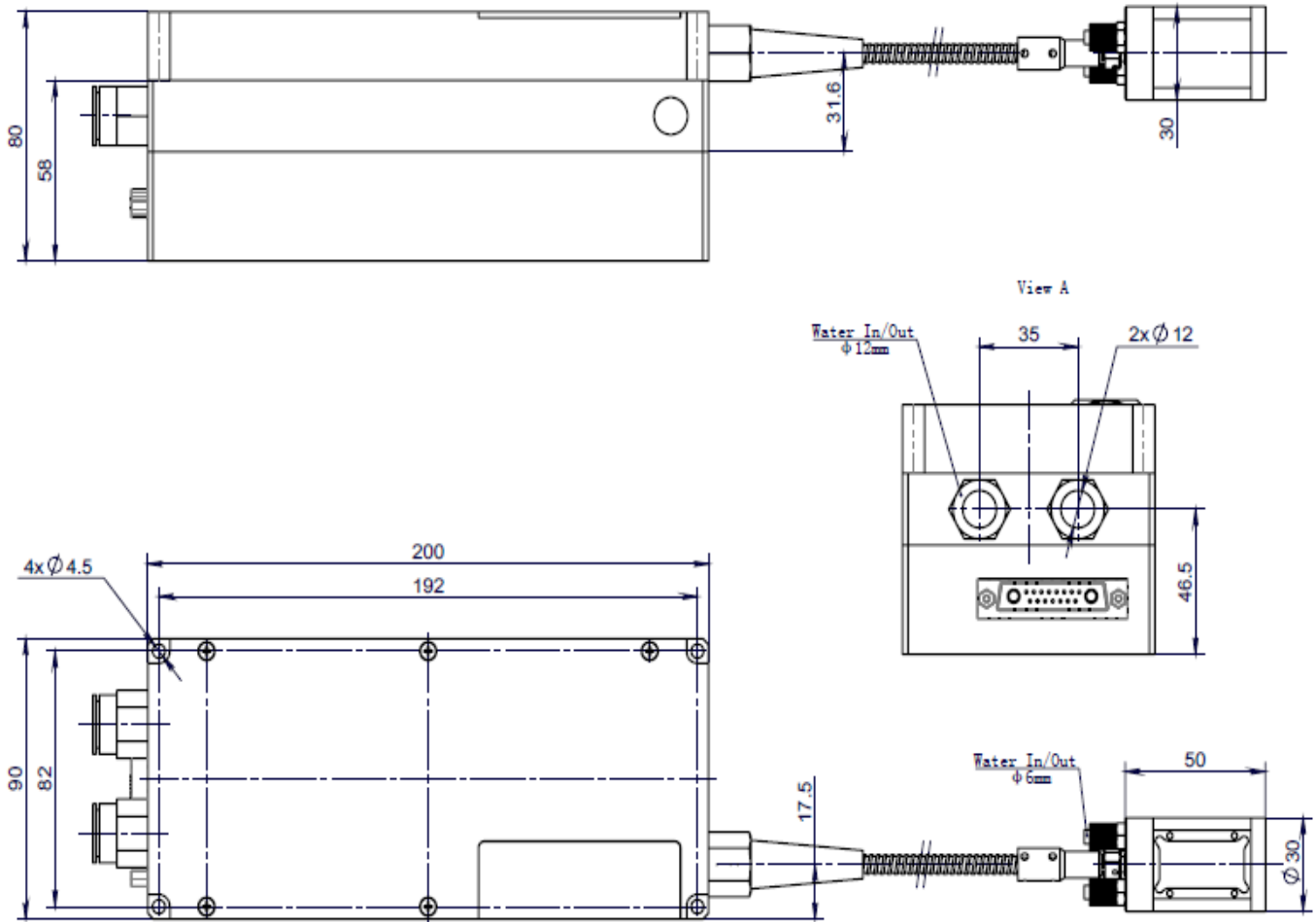
At BWT Beijing, to provide high quality products with reasonable price is our always goal.

808nm 300W High Power Fiber Coupled Diode Laser K808FN5RN-300.0W

System Composition	
High Power Fiber Coupled Diode Laser、Power Driver、Power Supply、Optical Lens	
Optical Data	
Power	300W
Wavelength	808±15nm
Fiber Length	3-5 m
Fiber Protection Tube	6mm Stainless Steel
Beam Size	12mm*12mm
Pulse Width	1-500ms
Pulse Frequency	1-20Hz
Mechanical Dimensions and Weight	
Weight	< 5kg
Dimension	Diode Laser and Power Driver (240mmx160mmx70mm) Power Supply (238mmx124mmx100mm)
Electrical Data	
Voltage	Single phase,220±20V,AC,PE,50/60Hz
Power Consumption	900W
Control Mode	RS232,AD control
Water Cooling	
Cooling Requirements	0.4 kW
Water Flow Rate	4.5L/min
Hydraulic Pressure	0.25MPa
Water Tube Diameter	φ 8mm
Others	
Temperature	15~35 °C
Storage Temperature	0 ~65 °C

808nm 300W High Power Fiber Coupled Diode Laser K808FN5RN-300.0W

Package Dimensions (mm)

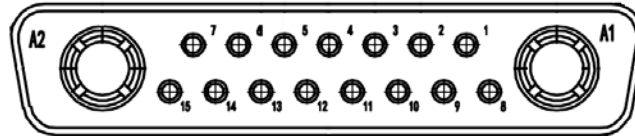


OPERATING NOTES

- ◆ Avoid eye exposure to direct or scattered radiation.
- ◆ Use constant current power supply. Avoid current surge.
- ◆ Laser diode must be used according to the specifications.
- ◆ Laser diode must work with good cooling.
- ◆ Storage: 0°C~ 65°C.

808nm 300W High Power Fiber Coupled Diode Laser K808FN5RN-300.0W

Interface Definition



Pin No.	Function	Description
A1	Positive power supply	Connecting switch power supply
A2	Negative power supply	
1	InterLock output	Only passive contacts such as switches and relays can be accessed, and no active signals can be accessed, otherwise the interface may be damaged.
8	InterLock return	
2	Enable signal	Input, +5V enable, 0V disable
3	Modulation signal	Input, +5V emission on, 0V emission off
4	Enable feedback	Output, +5V enable, 0V disable
5	Alarm signal	Output, +5V fault, 0V normal
9、10、11、12	GND1	Ground for enable、modulation、enable feedback、alarm signal
6	Power setpoint	Input, 0~5V to 0~maximum power
13	GND2	Ground for power setpoint
7	RS232_TX	For RS232 Transmission function
14	RS232_GND	RS232 ground
15	RS232_RX	For RS232 Receiver function



Declaration: information and specifications contained herein are deemed to be reliable and accurate. BWT Beijing reserves the right to change, alter or modify the design and specifications of these products at any time without notice.