

445nm~450nm 4W~4.5W TO5 Laser Diode| High Power LD With 9mm Package |Blue Laser Diode

450nm LD| 4.5W Output Power | 9mm TO5 Package | With Flat Window

WSLD-445-4500m-2

Wavespectrum Laser Group.

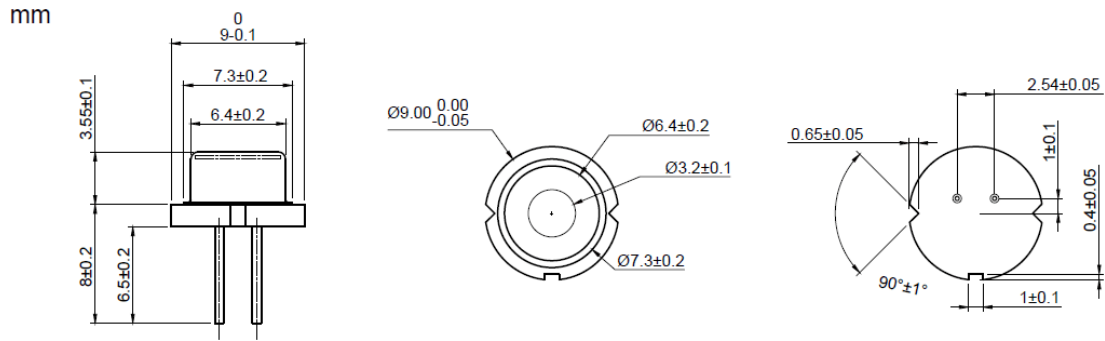
www.wavespectrum-laser.com

en.wavespectrum-laser.com.cn

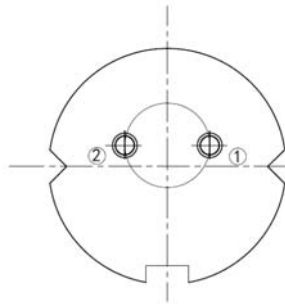
445nm Laser Diode		4.5W/TO5		
PARAMETER	SYMBOL	VALUE	UNIT	
Reverse Voltage	V_r	2.0	V	
Operating Temperature	T_{op}	0~+60	°C	
Storage Temperature	T_{stg}	-40~+85	°C	
Lead soldering temperature (10 sec.)	T_{is}	260	°C	
Features: <ul style="list-style-type: none"> 445nm 4.5W Output Power TO5 Package Long Lifetime 				
Applications: <ul style="list-style-type: none"> Medical Laser Treatment Laser Indicator Others 				
Specifications		WSLD-445-4500m-2		
		Min	Type	Max
Center Wavelength@25°C		±5nm	450nm	±15nm
Spectral Width (FWHM)		3.0nm		
Output Power		4.0W	4.5W	----
Recommended Operating Temperature		25°C		
Beam Divergence		----	15° _⊥ x 45° _{//}	----
Monitor Current		----		
Slope Efficiency		----	1.6W/A	----
Threshold Current (Typ.)		----	0.3A	0.6A
Operating Current (Typ.)		----	3.0A	3.3A
Operating Voltage		----	4.5V	5.5V
Package Style		TO5 (9mm)		



Package View



PIN Bottom View:



1	LD(+)
3	LD(-)

Electrically shorten LD module and store in non-extreme conditions.
 Suggest using the constant current power supply.

