



**MORE LIGHT**

JenLas® *D2.mini 3/8 W FC*

## Compact & reliable medical & scientific applications with Jenoptik's fiber-coupled solid-state laser modules.

### Applications

JenLas® *D2.mini* is a class 4 OEM laser source for

- Ophthalmologic instruments
- Dermatological instruments
- Life-science instrumentation

### Features

- Small installation size
- High laser output power stability
- Redundant power monitoring
- Redundant fiber connection monitoring
- Amplitude modulation possible up to 50 kHz
- Pilot beam
- Low cooling requirements
- Replaceable exit window

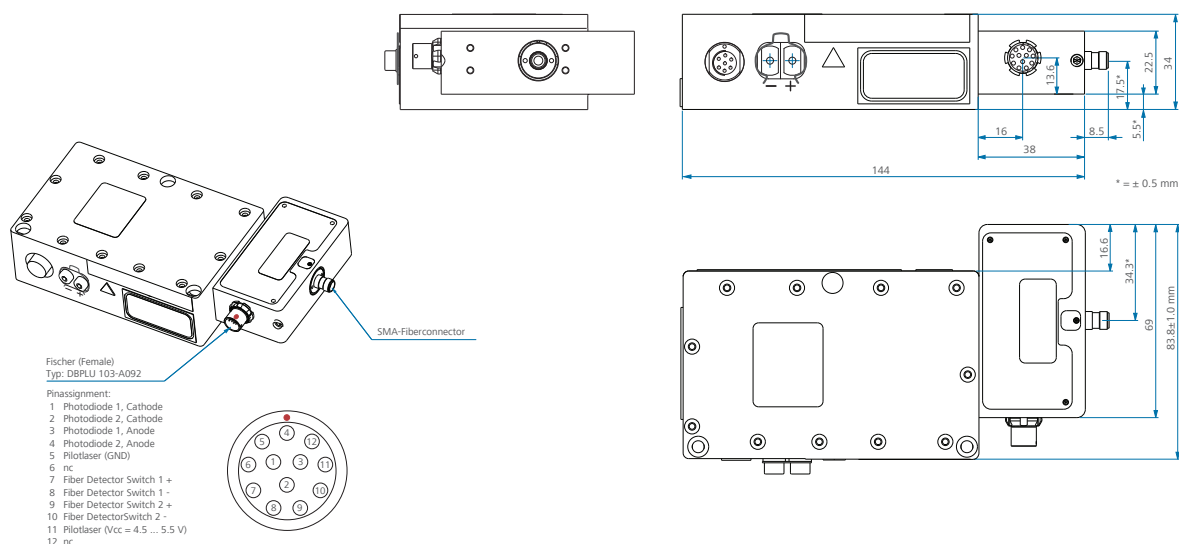
# Diode-pumped thin-disk laser, frequency-doubled

## JenLas® D2.mini 3/8 W | Specifications

| General Properties                                 | JenLas® D2.mini 3 W FC                                    | JenLas® D2.mini 8 W FC                           |
|--|---|--|
| Laser parameters                                   | see JenLas® D2.mini specification sheet                   |  |
| Wavelength   | 532 nm  |  |
| Output power laser (cw)                            | 3 W   | 8 W  |
| Coupling efficiency                                | typ. ~ 90 % / guaranteed ≥ 85 %                           |  |
| Power stability (rms)                              | < 3 %   |  |
| Pulse duration, modulation via diode laser current | ~ 1 ms to cw (amplitude modulation up to 50 kHz possible) |  |
| <b>Fiber Specifications</b>                        |   |  |
| Fiber connector                                    | SMA-905   |  |
| Fiber eccentricity                                 | ≤ 10 µm   |  |
| Fiber requirements                                 | suitable for ≥ 100 µm core diameter / NA ≥ 0,11           |  |
| Fiber watch dog                                    | two inductive proximity sensors                           |  |
| Pilot laser  | 638 nm / 0 – 3 mW   |  |
| Protection window                                  | yes, exchangeable by user                                 |  |
| <b>Electrical Specifications</b>                   |   |  |
| Electrical input data                              | 2 V / typ. 20 A (at pump diode) $I_{max} = 24 A$          | 2 V / typ. 34 A (at pump diode) $I_{max} = 40 A$ |
| Connector fiber coupling unit                      | 12 pin Fischer connector                                  |  |
| Connector laser cavity                             | 9 pin Fischer connector                                   |  |
| Power monitor                                      | redundant, 2 photodiodes                                  |  |
| <b>Mechanical Specifications</b>                   |   |  |
| Dimensions (W x H x L)                             | 153 mm x 80 mm x 24 mm                                    | 153 mm x 84 mm x 34 mm                           |
| Weight   | 0.5 kg  | 0.6 kg   |

Fiber coupling unit is not an accessory, has to be ordered with laser module. All specifications are measured with a standard fiber.

## JenLas® D2.mini 8 W FC



It is our policy to constantly improve the design and specifications. Accordingly, the details represented herein cannot be regarded as final and binding.